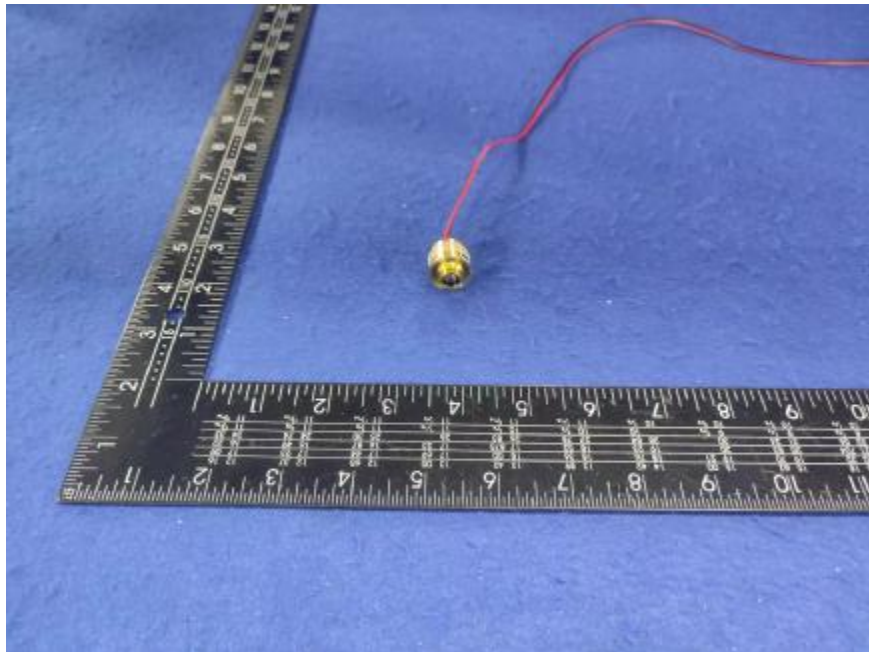


### Luminaire Photograph



|                     |          |                          |
|---------------------|----------|--------------------------|
| Light Output Ratio: | 76.3%    |                          |
| Luminaire Power:    | 0.9215 W |                          |
| SHR Nominal:        | 0.00     | Calculated using the TM5 |
| SHR Maximum:        | 0.30     | fine grid method.        |

C Range: 0 - 360DEG  
C Interval: 30.0DEG  
Test Speed: HIGH  
Temperature: 25.3 °C  
Operators: zoe  
Test Date: 2024-10-14

Range: 0 - 180DEG  
Interval: 1.0DEG  
Test System: EVERFINE GO-SPEX500\_V1 SYSTEM V2.00.461  
Humidity: 65.0%  
Test Distance: 3.160m [K=1.0000]  
Remarks: LAMP: BSCP-30G-11L-J11-3-A1-00-0-0 Ra: 90  
LENS: PM-0137 30R  
NOT DRIVER: 300mA  
30minutes warm-up

## LUMINOUS INTENSITY DISTRIBUTION DIAGRAM

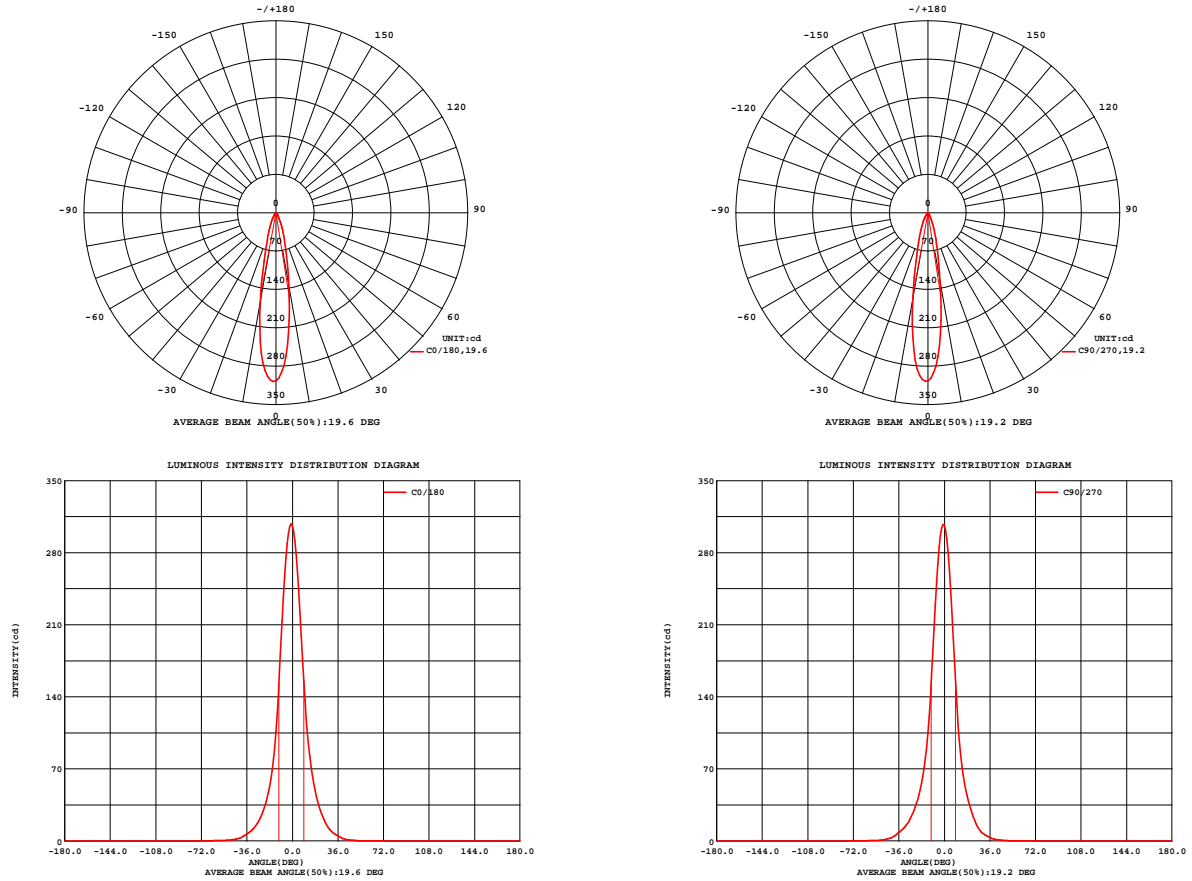


Fig. C0/C180

Fig. C90/C270

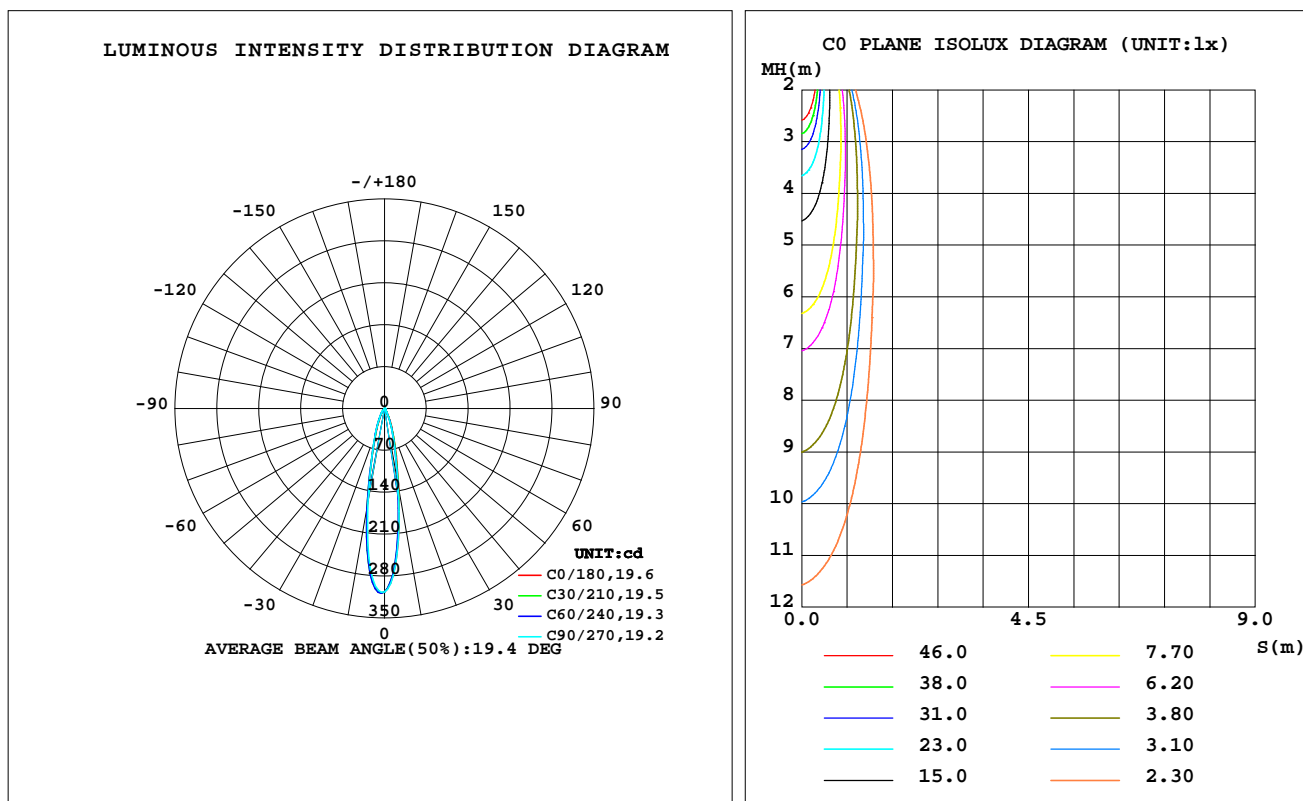
C Range: 0 - 360DEG  
C Interval: 30.0DEG  
Test Speed: HIGH  
Temperature:25.3℃  
Operators:zoe  
Test Date:2024-10-14

Range: 0 - 180DEG  
Interval: 1.0DEG  
Test System:EVERFINE GO-SPEX500\_V1 SYSTEM V2.00.461  
Humidity:65.0%  
Test Distance:3.160m [K=1.0000]  
Remarks: LAMP:BXCP-30G-11L-J11-3-A1-00-0-0 Ra:90  
LENS:PM-0137 30R  
NOT DRIVER:300mA  
30minutes warm-up

## LUMINAIRE PHOTOMETRIC TEST REPORT

|  |                    |                        |
|--|--------------------|------------------------|
| Test:U:3.0716V I:0.3000A P:0.9215W PF:1.0000 Freq:49.99Hz<br>Lamp Flux:76.466x1 lm |                    |                        |
| NAME: 2468.101   | TYPE:              | WEIGHT:                |
| SPEC.: 3000K   | DIM.:              | SERIAL No.: 2410141244 |
| MFR.: RISE   | SUR.: 0.00002826m2 | Shielding Angle:       |

| DATA OF LAMP     |           | PHOTOMETRIC DATA Eff: 63.35 lm/W |        |                 |          |
|------------------|-----------|----------------------------------|--------|-----------------|----------|
| MODEL            | Brideglux | I <sub>max</sub> (cd)            | 308.9  | S/MH(C0/180)    | 0.36     |
| NOMINAL POWER(W) | 1         | LOR(%)                           | 76.3   | S/MH(C90/270)   | 0.35     |
| RATED VOLTAGE(V) | 4         | TOTAL FLUX(lm)                   | 58.380 | UP,DN(C0-180)   | 0.0,34.4 |
| NOMINAL FLUX(lm) | 76.466    | CIE CLASS                        | DIRECT | UP,DN(C180-360) | 0.0,41.9 |
| LAMPS INSIDE     | 1         | up(%)                            | 0.0    | CIBSE SHR NOM   | 0.00     |
| TEST VOLTAGE(V)  | 4         | down(%)                          | 76.3   | CIBSE SHR MAX   | 0.30     |



C Range: 0 - 360DEG  
C Interval: 30.0DEG  
Test Speed: HIGH  
Temperature:25.3℃  
Operators:zoe  
Test Date:2024-10-14

Range: 0 - 180DEG  
Interval: 1.0DEG  
Test System:EVERFINE GO-SPEX500\_V1 SYSTEM V2.00.461  
Humidity:65.0%  
Test Distance:3.160m [K=1.0000]  
Remarks: LAMP:BXCP-30G-11L-J11-3-A1-00-0-0 Ra:90  
LENS:PM-0137 30R  
NOT DRIVER:300mA  
30minutes warm-up

## ZONAL FLUX DIAGRAM

### ZONAL FLUX DIAGRAM:

|     | C0                    | C45    | C90    | C135   | C180   | C225   | C270   | C315   |         | zone    | total | %lum,lamp |
|-----|-----------------------|--------|--------|--------|--------|--------|--------|--------|---------|---------|-------|-----------|
| 10  | 136.5                 | 130.1  | 130.7  | 146.7  | 166.6  | 169.5  | 160.2  | 148.6  | 0- 10   | 20.90   | 20.90 | 35.8,27.3 |
| 20  | 38.76                 | 35.88  | 34.82  | 37.59  | 41.41  | 44.43  | 44.90  | 42.23  | 10- 20  | 21.31   | 42.22 | 72.3,55.2 |
| 30  | 10.33                 | 8.041  | 7.749  | 9.657  | 12.97  | 15.35  | 15.33  | 13.44  | 20- 30  | 10.32   | 52.54 | 90,68.7   |
| 40  | 2.450                 | 1.705  | 1.602  | 2.415  | 3.654  | 4.676  | 4.377  | 3.439  | 30- 40  | 4.207   | 56.74 | 97.2,74.2 |
| 50  | 0.4585                | 0.3779 | 0.3584 | 0.6471 | 0.8414 | 1.035  | 0.8481 | 0.6231 | 40- 50  | 1.146   | 57.89 | 99.2,75.7 |
| 60  | 0.1545                | 0.1486 | 0.1440 | 0.2800 | 0.3814 | 0.4016 | 0.3227 | 0.2151 | 50- 60  | 0.3466  | 58.24 | 99.8,76.2 |
| 70  | 0.0031                | 0.0026 | 0.0037 | 0.0073 | 0.0129 | 0.0200 | 0.0214 | 0.0065 | 60- 70  | 0.1430  | 58.38 | 100,76.3  |
| 80  | 0                     | 0      | 0      | 0      | 0      | 0      | 0      | 0      | 70- 80  | 0.0016  | 58.38 | 100,76.3  |
| 90  | 0                     | 0      | 0      | 0      | 0      | 0      | 0      | 0      | 80- 90  | 0       | 58.38 | 100,76.3  |
| 100 | 0                     | 0      | 0      | 0      | 0      | 0      | 0      | 0      | 90-100  | 0       | 58.38 | 100,76.3  |
| 110 | 0                     | 0      | 0      | 0      | 0      | 0      | 0      | 0      | 100-110 | 0       | 58.38 | 100,76.3  |
| 120 | 0                     | 0      | 0      | 0      | 0      | 0      | 0      | 0      | 110-120 | 0       | 58.38 | 100,76.3  |
| 130 | 0                     | 0      | 0      | 0      | 0      | 0      | 0      | 0      | 120-130 | 0       | 58.38 | 100,76.3  |
| 140 | 0                     | 0      | 0      | 0      | 0      | 0      | 0      | 0      | 130-140 | 0       | 58.38 | 100,76.3  |
| 150 | 0                     | 0      | 0      | 0      | 0      | 0      | 0      | 0      | 140-150 | 0       | 58.38 | 100,76.3  |
| 160 | 0                     | 0      | 0      | 0      | 0      | 0      | 0      | 0      | 150-160 | 0       | 58.38 | 100,76.3  |
| 170 | 0                     | 0      | 0      | 0      | 0      | 0      | 0      | 0      | 160-170 | 0       | 58.38 | 100,76.3  |
| 180 | 0                     | 0      | 0      | 0      | 0      | 0      | 0      | 0      | 170-180 | 0       | 58.38 | 100,76.3  |
| DEG | LUMINOUS INTENSITY:cd |        |        |        |        |        |        |        |         | UNIT:lm |       |           |

C Range: 0 - 360DEG  
C Interval: 30.0DEG  
Test Speed: HIGH  
Temperature:25.3℃  
Operators:zoe  
Test Date:2024-10-14

Range: 0 - 180DEG  
Interval: 1.0DEG  
Test System:EVERFINE GO-SPEX500\_V1 SYSTEM V2.00.461  
Humidity:65.0%  
Test Distance:3.160m [K=1.0000]  
Remarks: LAMP:BXCP-30G-11L-J11-3-A1-00-0-0 Ra:90  
LENS:PM-0137 30R  
NOT DRIVER:300mA  
30minutes warm-up

### LUMINANCE LIMITATION CURVES

Test:U:3.0716V I:0.3000A P:0.9215W PF:1.0000 Freq:49.99Hz  
Lamp Flux:76.466x1 lm

NAME: 2468.101

TYPE:

WEIGHT:

SPEC.: 3000K

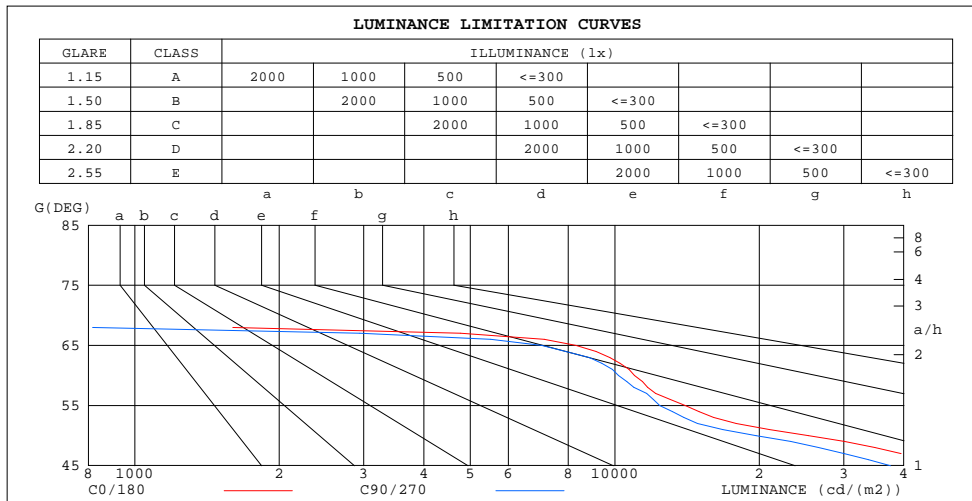
DIM.:

SERIAL No.: 2410141244

MFR.: RISE

SUR.: 0.00002826m2

Shielding Angle:



| LUMINANCE cd/(m2) |        |       |
|-------------------|--------|-------|
| G(180)            | G(270) | a/h   |
| 85                | 0      | 0     |
| 80                | 0      | 0     |
| 75                | 0      | 0     |
| 70                | 321    | 384   |
| 65                | 8296   | 7042  |
| 60                | 10982  | 10179 |
| 55                | 14028  | 12409 |
| 50                | 25344  | 19709 |
| 45                | 50169  | 37510 |

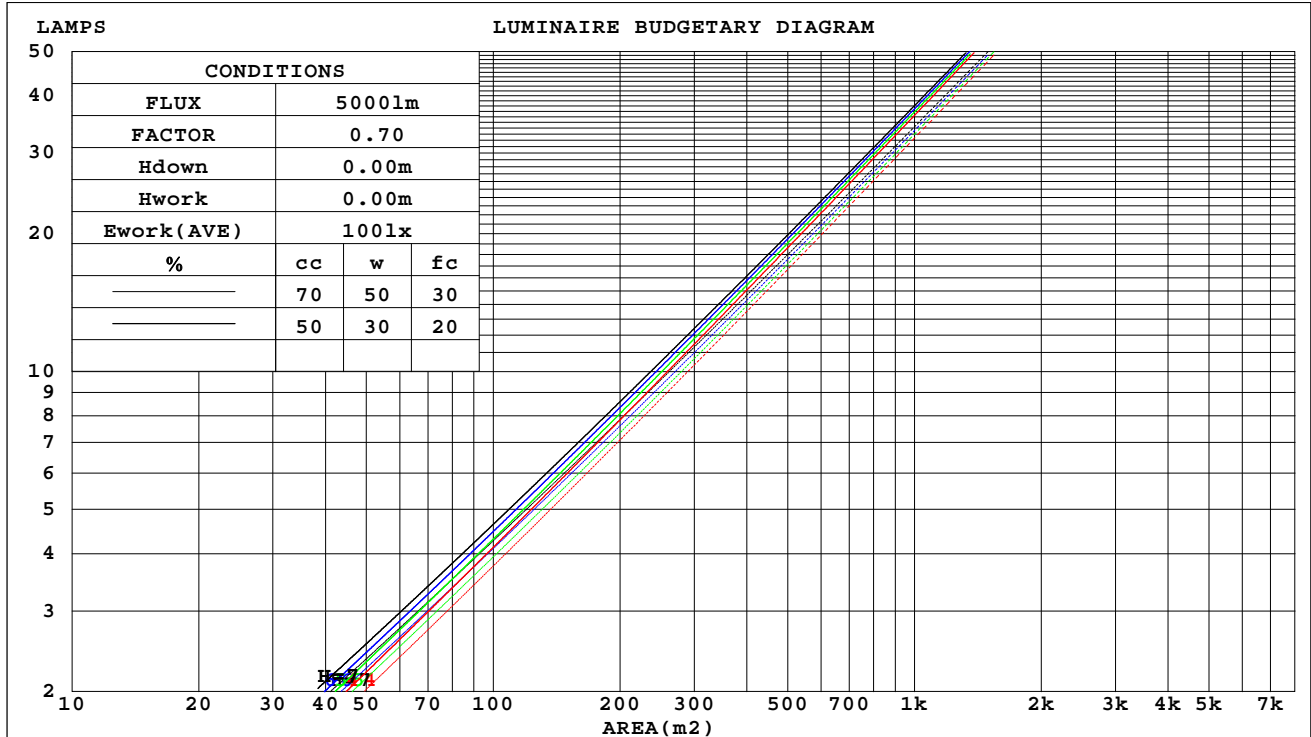
C Range: 0 - 360DEG  
C Interval: 30.0DEG  
Test Speed: HIGH  
Temperature:25.3℃  
Operators:zoe  
Test Date:2024-10-14

Range: 0 - 180DEG  
Interval: 1.0DEG  
Test System:EVERFINE GO-SPEX500\_V1 SYSTEM V2.00.461  
Humidity:65.0%  
Test Distance:3.160m [K=1.0000]  
Remarks: LAMP:BXCP-30G-11L-J11-3-A1-00-0-0 Ra:90  
LENS:PM-0137 30R  
NOT DRIVER:300mA  
30minutes warm-up

## CU AND LUMINAIRE BUDGETARY ESTIMATE DIAGRAM

|  |                    |                        |
|--|--------------------|------------------------|
| Test:U:3.0716V I:0.3000A P:0.9215W PF:1.0000 Freq:49.99Hz<br>Lamp Flux:76.466x1 lm |                    |                        |
| NAME: 2468.101   | TYPE:              | WEIGHT:                |
| SPEC.: 3000K   | DIM.:              | SERIAL No.: 2410141244 |
| MFR.: RISE   | SUR.: 0.00002826m2 | Shielding Angle:       |

| cc  | 80%                   |     |     | 70% |     |     | 50% |     |     | 30% |     |     | 10% |     |     | 0 |
|-----|-----------------------|-----|-----|-----|-----|-----|-----|-----|-----|-----|-----|-----|-----|-----|-----|---|
| w   | 50%                   | 30% | 10% | 50% | 30% | 10% | 50% | 30% | 10% | 50% | 30% | 10% | 50% | 30% | 10% | 0 |
| fc  | 20%                   |     |     | 20% |     |     | 20% |     |     | 20% |     |     | 20% |     |     | 0 |
| RCR | RCR:Room Cavity Ratio |     |     |     |     |     |     |     |     |     |     |     |     |     |     |   |



C Range: 0 - 360DEG  
C Interval: 30.0DEG  
Test Speed: HIGH  
Temperature:25.3℃  
Operators:zoe  
Test Date:2024-10-14

Range: 0 - 180DEG  
Interval: 1.0DEG  
Test System:EVERFINE GO-SPEX500\_V1 SYSTEM V2.00.461  
Humidity:65.0%  
Test Distance:3.160m [K=1.0000]  
Remarks: LAMP:BXCP-30G-11L-J11-3-A1-00-0-0 Ra:90  
LENS:PM-0137 30R  
NOT DRIVER:300mA  
30minutes warm-up

### WEC AND CCEC

|  |                    |                        |
|--|--------------------|------------------------|
| Test:U:3.0716V I:0.3000A P:0.9215W PF:1.0000 Freq:49.99Hz<br>Lamp Flux:76.466x1 lm |                    |                        |
| NAME: 2468.101   | TYPE:              | WEIGHT:                |
| SPEC.: 3000K   | DIM.:              | SERIAL No.: 2410141244 |
| MFR.: RISE   | SUR.: 0.00002826m2 | Shielding Angle:       |

| cc   | 80%                   |      |      | 70%  |      |      | 50%                             |      |      | 30%  |      |      | 10%  |      |      | 0 |
|------|-----------------------|------|------|------|------|------|---------------------------------|------|------|------|------|------|------|------|------|---|
| w    | 50%                   | 30%  | 10%  | 50%  | 30%  | 10%  | 50%                             | 30%  | 10%  | 50%  | 30%  | 10%  | 50%  | 30%  | 10%  | 0 |
| fc   | 20%                   |      |      | 20%  |      |      | 20%                             |      |      | 20%  |      |      | 20%  |      |      | 0 |
| RCR  | RCR:Room Cavity Ratio |      |      |      |      |      | Wall Exitance Coefficients(WEC) |      |      |      |      |      |      |      |      |   |
| 0.0  |                       |      |      |      |      |      |                                 |      |      |      |      |      |      |      |      |   |
| 1.0  | .108                  | .062 | .020 | .103 | .059 | .019 | .094                            | .054 | .017 | .085 | .049 | .016 | .077 | .045 | .014 |   |
| 2.0  | .101                  | .055 | .017 | .097 | .053 | .016 | .089                            | .050 | .015 | .082 | .046 | .014 | .075 | .043 | .013 |   |
| 3.0  | .095                  | .050 | .015 | .091 | .049 | .015 | .085                            | .046 | .014 | .079 | .043 | .013 | .073 | .040 | .013 |   |
| 4.0  | .089                  | .046 | .014 | .086 | .045 | .013 | .081                            | .043 | .013 | .075 | .041 | .012 | .071 | .038 | .012 |   |
| 5.0  | .084                  | .043 | .012 | .082 | .042 | .012 | .077                            | .040 | .012 | .072 | .038 | .011 | .068 | .036 | .011 |   |
| 6.0  | .080                  | .040 | .011 | .077 | .039 | .011 | .073                            | .038 | .011 | .070 | .036 | .011 | .066 | .035 | .010 |   |
| 7.0  | .076                  | .037 | .011 | .074 | .037 | .010 | .070                            | .035 | .010 | .067 | .034 | .010 | .064 | .033 | .010 |   |
| 8.0  | .072                  | .035 | .010 | .070 | .035 | .010 | .067                            | .034 | .010 | .064 | .033 | .009 | .062 | .032 | .009 |   |
| 9.0  | .069                  | .033 | .009 | .067 | .033 | .009 | .065                            | .032 | .009 | .062 | .031 | .009 | .060 | .030 | .009 |   |
| 10.0 | .066                  | .032 | .009 | .065 | .031 | .009 | .062                            | .030 | .009 | .060 | .030 | .008 | .058 | .029 | .008 |   |

| cc   | 80%                   |      |      | 70%  |      |      | 50%  |      |      | 30%  |      |      | 10%  |      |      | 0 |
|------|-----------------------|------|------|--|------|------|------|------|------|------|------|------|------|------|------|---|
| w    | 50%                   | 30%  | 10%  | 50%  | 30%  | 10%  | 50%  | 30%  | 10%  | 50%  | 30%  | 10%  | 50%  | 30%  | 10%  | 0 |
| fc   | 20%                   |      |      | 20%  |      |      | 20%  |      |      | 20%  |      |      | 20%  |      |      | 0 |
| RCR  | RCR:Room Cavity Ratio |      |      | Ceiling Cavity Exitance Coefficients(CCEC) |      |      |      |      |      |      |      |      |      |      |      |   |
| 0.0  | .145                  | .145 | .145 | .124                                       | .124 | .124 | .085 | .085 | .085 | .049 | .049 | .049 | .016 | .016 | .016 |   |
| 1.0  | .129                  | .120 | .113 | .110                                       | .103 | .097 | .075 | .071 | .067 | .043 | .041 | .039 | .014 | .013 | .013 |   |
| 2.0  | .115                  | .101 | .090 | .099                                       | .087 | .077 | .068 | .060 | .054 | .039 | .035 | .032 | .013 | .011 | .010 |   |
| 3.0  | .104                  | .087 | .072 | .089                                       | .075 | .063 | .061 | .052 | .044 | .035 | .030 | .026 | .011 | .010 | .009 |   |
| 4.0  | .095                  | .075 | .060 | .081                                       | .065 | .052 | .056 | .045 | .036 | .032 | .026 | .022 | .010 | .009 | .007 |   |
| 5.0  | .087                  | .066 | .050 | .075                                       | .057 | .043 | .051 | .040 | .031 | .030 | .023 | .018 | .010 | .008 | .006 |   |
| 6.0  | .080                  | .058 | .042 | .069                                       | .050 | .036 | .048 | .035 | .026 | .028 | .021 | .015 | .009 | .007 | .005 |   |
| 7.0  | .075                  | .052 | .036 | .064                                       | .045 | .031 | .044 | .031 | .022 | .026 | .019 | .013 | .008 | .006 | .004 |   |
| 8.0  | .070                  | .047 | .031 | .060                                       | .040 | .027 | .042 | .028 | .019 | .024 | .017 | .011 | .008 | .005 | .004 |   |
| 9.0  | .065                  | .042 | .027 | .056                                       | .037 | .023 | .039 | .026 | .017 | .023 | .015 | .010 | .007 | .005 | .003 |   |
| 10.0 | .062                  | .039 | .024 | .053                                       | .034 | .021 | .037 | .024 | .015 | .022 | .014 | .009 | .007 | .005 | .003 |   |

C Range: 0 - 360DEG  
C Interval: 30.0DEG  
Test Speed: HIGH  
Temperature:25.3℃  
Operators:zoe  
Test Date:2024-10-14

Range: 0 - 180DEG  
Interval: 1.0DEG  
Test System:EVERFINE GO-SPEX500\_V1 SYSTEM V2.00.461  
Humidity:65.0%  
Test Distance:3.160m [K=1.0000]  
Remarks: LAMP:BXCP-30G-11L-J11-3-A1-00-0-0 Ra:90  
LENS:PM-0137 30R  
NOT DRIVER:300mA  
30minutes warm-up

## UGR(Unified Glare Rating) Table

|  |                  |      |      |      |                    |                |      |                        |      |      |      |
|--|------------------|------|------|------|--------------------|----------------|------|------------------------|------|------|------|
| Test:U:3.0716V I:0.3000A P:0.9215W PF:1.0000 Freq:49.99Hz<br>Lamp Flux:76.466x1 lm |                  |      |      |      |                    |                |      |                        |      |      |      |
| NAME: 2468.101   |                  |      |      |      | TYPE:              |                |      | WEIGHT:                |      |      |      |
| SPEC.: 3000K   |                  |      |      |      | DIM.:              |                |      | SERIAL No.: 2410141244 |      |      |      |
| MFR.: RISE   |                  |      |      |      | SUR.: 0.00002826m2 |                |      | Shielding Angle:       |      |      |      |
| ceiling/cavity   | 0.7              | 0.7  | 0.5  | 0.5  | 0.3                | 0.7            | 0.7  | 0.5                    | 0.5  | 0.3  |      |
| walls  | 0.5              | 0.3  | 0.5  | 0.3  | 0.3                | 0.5            | 0.3  | 0.5                    | 0.3  | 0.3  |      |
| working plane  | 0.2              | 0.2  | 0.2  | 0.2  | 0.2                | 0.2            | 0.2  | 0.2                    | 0.2  | 0.2  |      |
| Room dimensions  | Viewed crosswise |      |      |      |                    | Viewed endwise |      |                        |      |      |      |
| x = 2H y = 2H  | 26.6             | 27.3 | 26.8 | 27.5 | 27.6               | 25.3           | 26.0 | 25.5                   | 26.1 | 26.3 |      |
|  | 3H               | 26.5 | 27.1 | 26.7 | 27.3               | 27.5           | 25.1 | 25.8                   | 25.4 | 26.0 | 26.2 |
|  | 4H               | 26.4 | 27.0 | 26.7 | 27.2               | 27.5           | 25.1 | 25.7                   | 25.3 | 25.9 | 26.1 |
|  | 6H               | 26.3 | 26.9 | 26.6 | 27.1               | 27.4           | 25.0 | 25.5                   | 25.3 | 25.8 | 26.0 |
|  | 8H               | 26.3 | 26.9 | 26.6 | 27.1               | 27.4           | 24.9 | 25.5                   | 25.2 | 25.7 | 26.0 |
|  | 12H              | 26.3 | 26.8 | 26.6 | 27.0               | 27.3           | 24.9 | 25.4                   | 25.2 | 25.7 | 25.9 |
| 4H   | 2H               | 26.4 | 27.1 | 26.7 | 27.3               | 27.5           | 25.1 | 25.7                   | 25.3 | 25.9 | 26.1 |
|  | 3H               | 26.3 | 26.8 | 26.6 | 27.1               | 27.3           | 24.9 | 25.5                   | 25.2 | 25.7 | 26.0 |
|  | 4H               | 26.2 | 26.7 | 26.5 | 27.0               | 27.3           | 24.8 | 25.3                   | 25.2 | 25.6 | 25.9 |
|  | 6H               | 26.1 | 26.5 | 26.5 | 26.9               | 27.2           | 24.7 | 25.2                   | 25.1 | 25.5 | 25.8 |
|  | 8H               | 26.0 | 26.4 | 26.4 | 26.8               | 27.1           | 24.7 | 25.1                   | 25.1 | 25.4 | 25.8 |
|  | 12H              | 26.0 | 26.4 | 26.4 | 26.7               | 27.1           | 24.6 | 25.0                   | 25.0 | 25.4 | 25.8 |
| 8H   | 4H               | 26.0 | 26.4 | 26.4 | 26.8               | 27.1           | 24.7 | 25.1                   | 25.1 | 25.4 | 25.8 |
|  | 6H               | 25.9 | 26.3 | 26.3 | 26.6               | 27.1           | 24.6 | 24.9                   | 25.0 | 25.3 | 25.7 |
|  | 8H               | 25.9 | 26.2 | 26.3 | 26.6               | 27.0           | 24.5 | 24.8                   | 25.0 | 25.2 | 25.7 |
|  | 12H              | 25.8 | 26.1 | 26.3 | 26.5               | 27.0           | 24.4 | 24.7                   | 24.9 | 25.1 | 25.6 |
| 12H  | 4H               | 26.0 | 26.4 | 26.4 | 26.7               | 27.1           | 24.6 | 25.0                   | 25.0 | 25.4 | 25.8 |
|  | 6H               | 25.9 | 26.2 | 26.3 | 26.6               | 27.0           | 24.5 | 24.8                   | 25.0 | 25.2 | 25.7 |
|  | 8H               | 25.8 | 26.1 | 26.3 | 26.5               | 27.0           | 24.4 | 24.7                   | 24.9 | 25.1 | 25.6 |
| Variations with the observer position at spacings(CIE Pub.117):                    |                  |      |      |      |                    |                |      |                        |      |      |      |
| S = 1.0H   | + 4.4 / - 9.5    |      |      |      |                    | + 3.7 / - 7.9  |      |                        |      |      |      |
| 1.5H   | + 6.6 / - 8.0    |      |      |      |                    | + 5.8 / - 6.7  |      |                        |      |      |      |
| 2.0H   | + 5.8 / - 3.4    |      |      |      |                    | + 4.8 / - 3.2  |      |                        |      |      |      |

CIE Pub.117, 76.47 lm Total Lamp Luminous Flux Correct (8log(F/F0) = -8.9)  
Area: 2.826e-005 m2

C Range: 0 - 360DEG  
C Interval: 30.0DEG  
Test Speed: HIGH  
Temperature:25.3℃  
Operators:zoe  
Test Date:2024-10-14

Range: 0 - 180DEG  
Interval: 1.0DEG  
Test System:EVERFINE GO-SPEX500\_V1 SYSTEM V2.00.461  
Humidity:65.0%  
Test Distance:3.160m [K=1.0000]  
Remarks: LAMP:BXCP-30G-11L-J11-3-A1-00-0-0 Ra:90  
LENS:PM-0137 30R  
NOT DRIVER:300mA  
30minutes warm-up



### UTILIZATION FACTORS TABLE

|  |                    |                        |
|--|--------------------|------------------------|
| Test:U:3.0716V I:0.3000A P:0.9215W PF:1.0000 Freq:49.99Hz<br>Lamp Flux:76.466x1 lm |                    |                        |
| NAME: 2468.101   | TYPE:              | WEIGHT:                |
| SPEC.: 3000K   | DIM.:              | SERIAL No.: 2410141244 |
| MFR.: RISE   | SUR.: 0.00002826m2 | Shielding Angle:       |

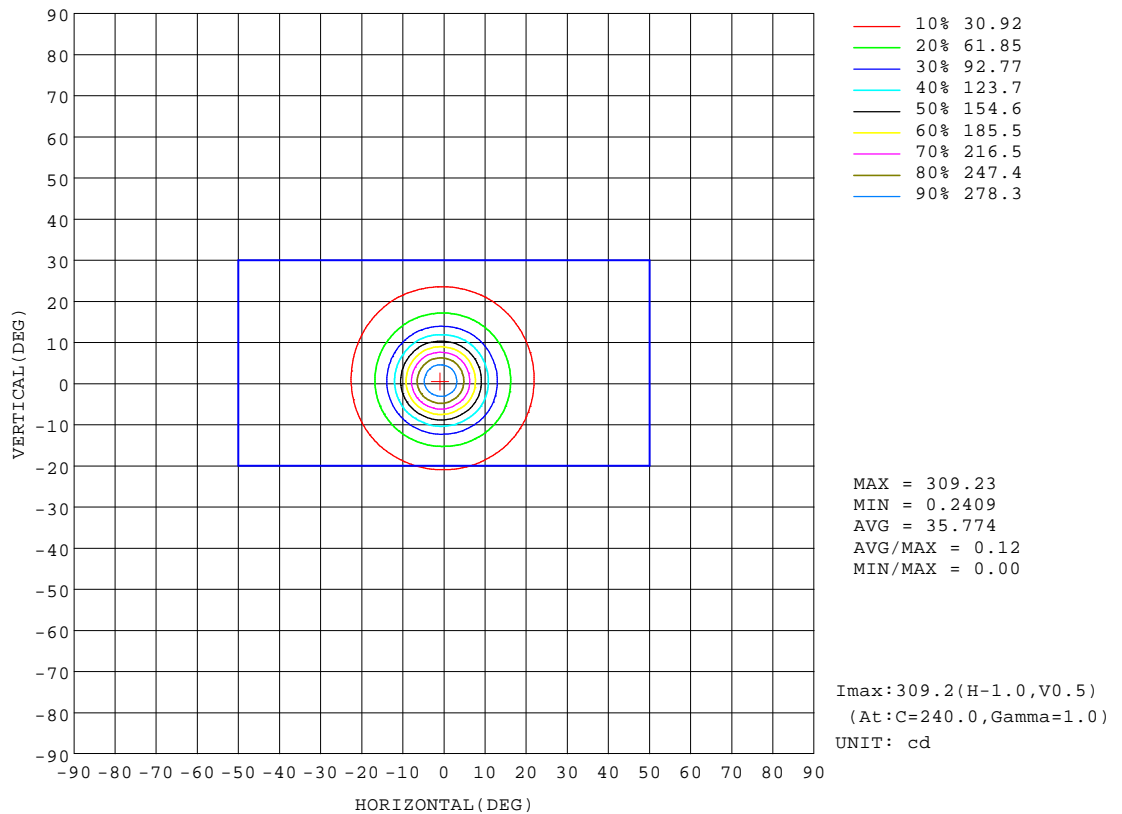
| REFLECTANCE                      |   |     |           |     |     |     |     |               |     |        |
|----------------------------------|---|-----|-----------|-----|-----|-----|-----|---------------|-----|--------|
| Ceiling                          | 0.8   | 0.8 | 0.8       | 0.7 | 0.7 | 0.7 | 0.5 | 0.5           | 0.5 | 0      |
| Walls                            | 0.7   | 0.5 | 0.3       | 0.7 | 0.5 | 0.3 | 0.7 | 0.5           | 0.3 | 0      |
| Working plane                    | 0.2   | 0.2 | 0.2       | 0.2 | 0.2 | 0.2 | 0.2 | 0.2           | 0.2 | 0      |
| ROOM INDEX                       | UTILIZATION FACTORS(PERCENT) $k(RI) \times RCR = 5$ |     |           |     |     |     |     |               |     |        |
| k = 0.60                         | 69  | 64  | 61        | 68  | 64  | 61  | 68  | 64            | 61  | 59     |
| 0.80                             | 74  | 70  | 67        | 74  | 70  | 67  | 73  | 69            | 67  | 64     |
| 1.00                             | 77  | 73  | 71        | 76  | 73  | 70  | 75  | 73            | 70  | 67     |
| 1.25                             | 80  | 76  | 74        | 79  | 76  | 73  | 78  | 75            | 73  | 70     |
| 1.50                             | 82  | 78  | 76        | 81  | 78  | 76  | 79  | 77            | 75  | 72     |
| 2.00                             | 84  | 81  | 78        | 83  | 80  | 78  | 80  | 78            | 77  | 73     |
| 2.50                             | 85  | 82  | 80        | 84  | 81  | 79  | 81  | 79            | 78  | 73     |
| 3.00                             | 86  | 83  | 81        | 84  | 82  | 81  | 82  | 80            | 79  | 74     |
| 4.00                             | 87  | 85  | 84        | 86  | 84  | 83  | 83  | 82            | 81  | 75     |
| 5.00                             | 88  | 87  | 85        | 87  | 85  | 84  | 84  | 83            | 82  | 76     |
| ROOM INDEX                       | UF(total)   |     |           |     |     |     |     |               |     | Direct |
| According to DIN EN 13032-2 2004 |   |     | Suspended |     |     |     |     | SHRNOM = 1.25 |     |        |

C Range: 0 - 360DEG  
C Interval: 30.0DEG  
Test Speed: HIGH  
Temperature:25.3℃  
Operators:zoe  
Test Date:2024-10-14

Range: 0 - 180DEG  
Interval: 1.0DEG  
Test System:EVERFINE GO-SPEX500\_V1 SYSTEM V2.00.461  
Humidity:65.0%  
Test Distance:3.160m [K=1.0000]  
Remarks: LAMP:BXCP-30G-11L-J11-3-A1-00-0-0 Ra:90  
LENS:PM-0137 30R  
NOT DRIVER:300mA  
30minutes warm-up

## ISOCANDELA DIAGRAM

|  |                    |                        |
|--|--------------------|------------------------|
| Test:U:3.0716V I:0.3000A P:0.9215W PF:1.0000 Freq:49.99Hz<br>Lamp Flux:76.466x1 lm |                    |                        |
| NAME: 2468.101   | TYPE:              | WEIGHT:                |
| SPEC.: 3000K   | DIM.:              | SERIAL No.: 2410141244 |
| MFR.: RISE   | SUR.: 0.00002826m2 | Shielding Angle:       |

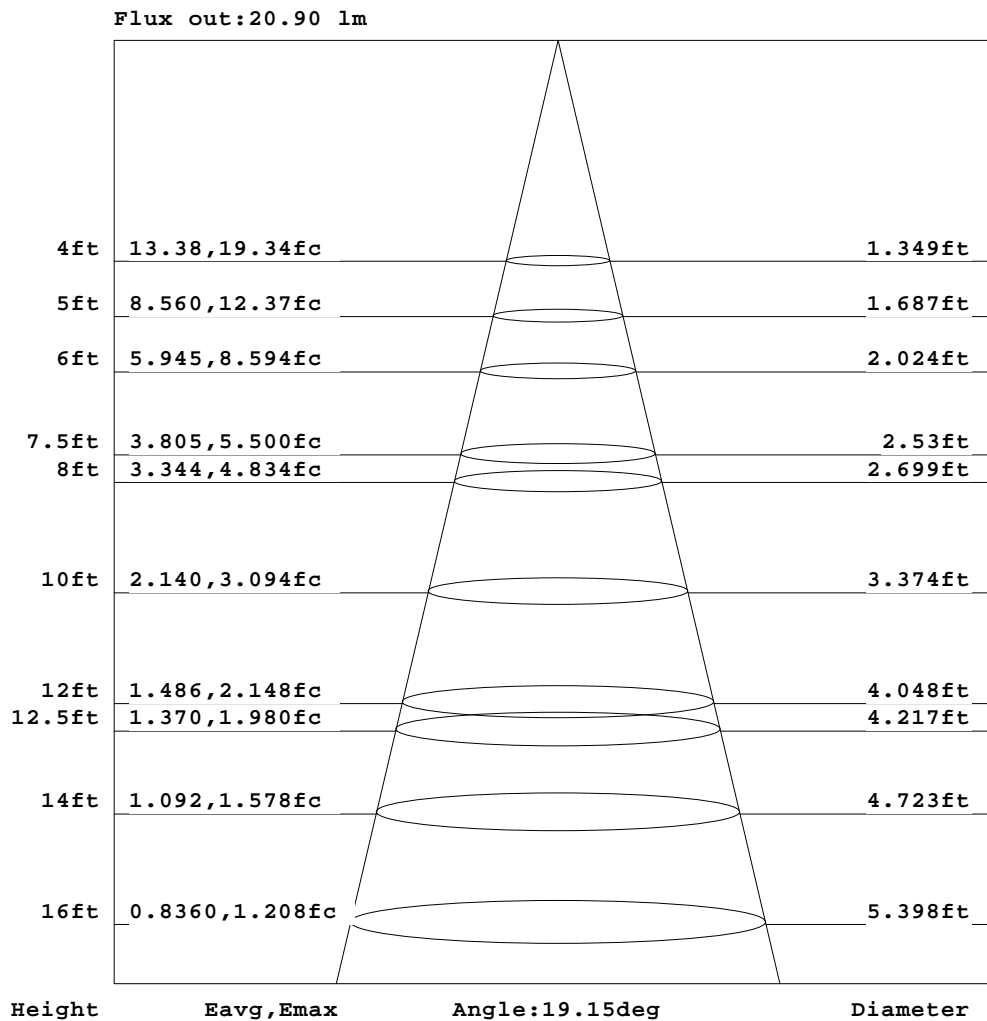


C Range: 0 - 360DEG  
C Interval: 30.0DEG  
Test Speed: HIGH  
Temperature:25.3℃  
Operators:zoe  
Test Date:2024-10-14

Range: 0 - 180DEG  
Interval: 1.0DEG  
Test System:EVERFINE GO-SPEX500\_V1 SYSTEM V2.00.461  
Humidity:65.0%  
Test Distance:3.160m [K=1.0000]  
Remarks: LAMP:BXCP-30G-11L-J11-3-A1-00-0-0 Ra:90  
LENS:PM-0137 30R  
NOT DRIVER:300mA  
30minutes warm-up

## AAI Figure

|  |                    |                        |
|--|--------------------|------------------------|
| Test:U:3.0716V I:0.3000A P:0.9215W PF:1.0000 Freq:49.99Hz<br>Lamp Flux:76.466x1 lm |                    |                        |
| NAME: 2468.101   | TYPE:              | WEIGHT:                |
| SPEC.: 3000K   | DIM.:              | SERIAL No.: 2410141244 |
| MFR.: RISE   | SUR.: 0.00002826m2 | Shielding Angle:       |



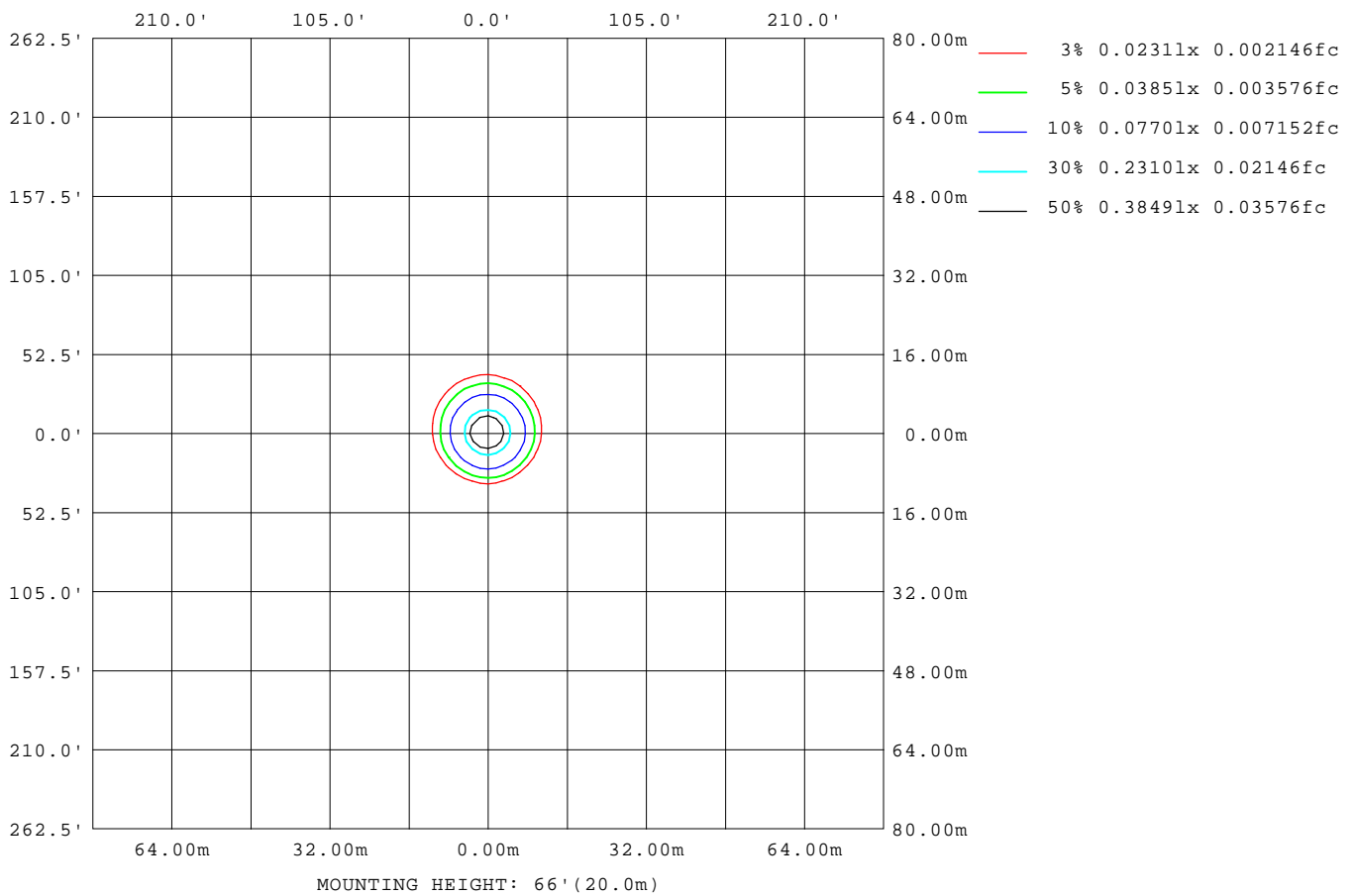
Note:The Curves indicate the illuminated area and the average illumination when the luminaire is at different distance.

C Range: 0 - 360DEG  
C Interval: 30.0DEG  
Test Speed: HIGH  
Temperature:25.3℃  
Operators:zoe  
Test Date:2024-10-14

Range: 0 - 180DEG  
Interval: 1.0DEG  
Test System:EVERFINE GO-SPEX500\_V1 SYSTEM V2.00.461  
Humidity:65.0%  
Test Distance:3.160m [K=1.0000]  
Remarks: LAMP:BXCP-30G-11L-J11-3-A1-00-0-0 Ra:90  
LENS:PM-0137 30R  
NOT DRIVER:300mA  
30minutes warm-up

## ISOLUX DIAGRAM

|  |                    |                        |
|--|--------------------|------------------------|
| Test:U:3.0716V I:0.3000A P:0.9215W PF:1.0000 Freq:49.99Hz<br>Lamp Flux:76.466x1 lm |                    |                        |
| NAME: 2468.101   | TYPE:              | WEIGHT:                |
| SPEC.: 3000K   | DIM.:              | SERIAL No.: 2410141244 |
| MFR.: RISE   | SUR.: 0.00002826m2 | Shielding Angle:       |



C Range: 0 - 360DEG  
C Interval: 30.0DEG  
Test Speed: HIGH  
Temperature:25.3℃  
Operators:zoe  
Test Date:2024-10-14

Range: 0 - 180DEG  
Interval: 1.0DEG  
Test System:EVERFINE GO-SPEX500\_V1 SYSTEM V2.00.461  
Humidity:65.0%  
Test Distance:3.160m [K=1.0000]  
Remarks: LAMP:BXCP-30G-11L-J11-3-A1-00-0-0 Ra:90  
LENS:PM-0137 30R  
NOT DRIVER:300mA  
30minutes warm-up

### LED Avg.L Report

|  |                    |                        |
|--|--------------------|------------------------|
| Test:U:3.0716V I:0.3000A P:0.9215W PF:1.0000 Freq:49.99Hz<br>Lamp Flux:76.466x1 lm |                    |                        |
| NAME: 2468.101   | TYPE:              | WEIGHT:                |
| SPEC.: 3000K   | DIM.:              | SERIAL No.: 2410141244 |
| MFR.: RISE   | SUR.: 0.00002826m2 | Shielding Angle:       |

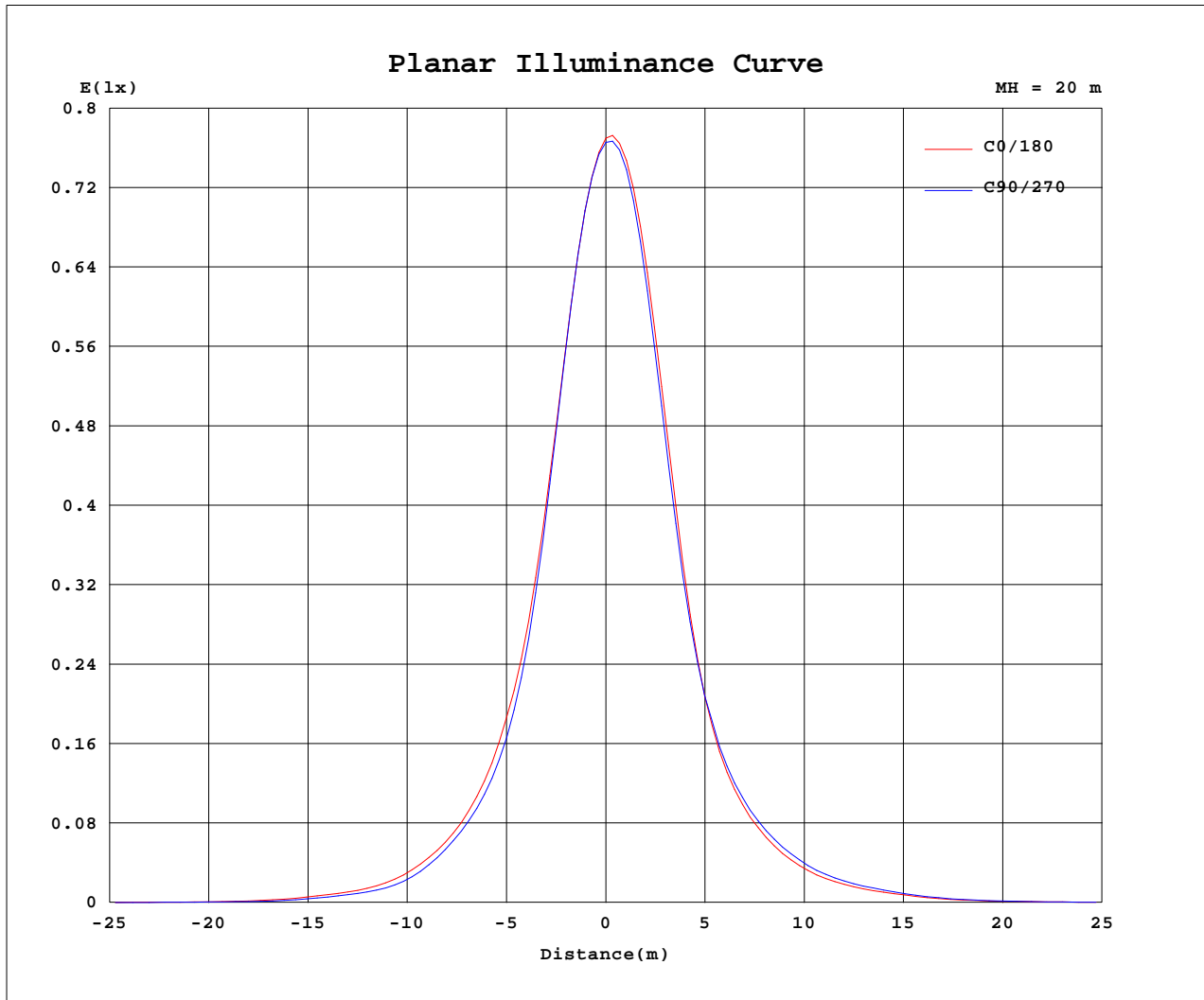
| AvgL           | cd/m2 |
|----------------|-------|
| L_0~180(65)av  | 13732 |
| L_0~180(75)av  | 0     |
| L_0~180(85)av  | 0     |
| L_90~270(65)av | 12337 |
| L_90~270(75)av | 42    |
| L_90~270(85)av | 0     |
| L_45(65)av     | 13805 |
| L_45(75)av     | 34    |
| L_45(85)av     | 0     |

Standard: GB/T 29293-2012

C Range: 0 - 360DEG  
C Interval: 30.0DEG  
Test Speed: HIGH  
Temperature:25.3℃  
Operators:zoe  
Test Date:2024-10-14

Range: 0 - 180DEG  
Interval: 1.0DEG  
Test System:EVERFINE GO-SPEX500\_V1 SYSTEM V2.00.461  
Humidity:65.0%  
Test Distance:3.160m [K=1.0000]  
Remarks: LAMP:BXCP-30G-11L-J11-3-A1-00-0-0 Ra:90  
LENS:PM-0137 30R  
NOT DRIVER:300mA  
30minutes warm-up

## Planar Illuminance Curve



C Range: 0 - 360DEG  
 C Interval: 30.0DEG  
 Test Speed: HIGH  
 Temperature: 25.3 °C  
 Operators: zoe  
 Test Date: 2024-10-14

Range: 0 - 180DEG  
 Interval: 1.0DEG  
 Test System: EVERFINE GO-SPEX500\_V1 SYSTEM V2.00.461  
 Humidity: 65.0%  
 Test Distance: 3.160m [K=1.0000]  
 Remarks: LAMP: BXCP-30G-11L-J11-3-A1-00-0-0 Ra: 90  
 LENS: PM-0137 30R  
 NOT DRIVER: 300mA  
 30minutes warm-up



## LUMINOUS DISTRIBUTION INTENSITY DATA

|  |                    |                        |
|--|--------------------|------------------------|
| Test:U:3.0716V I:0.3000A P:0.9215W PF:1.0000 Freq:49.99Hz<br>Lamp Flux:76.466x1 lm |                    |                        |
| NAME: 2468.101   | TYPE:              | WEIGHT:                |
| SPEC.: 3000K   | DIM.:              | SERIAL No.: 2410141244 |
| MFR.: RISE   | SUR.: 0.00002826m2 | Shielding Angle:       |

Table--1

UNIT: cd

| C(DEG)<br>(DEG) | 0    | 30   | 60   | 90   | 120  | 150  | 180  | 210  | 240  | 270  | 300  | 330  |  |  |  |  |  |  |
|-----------------|------|------|------|------|------|------|------|------|------|------|------|------|--|--|--|--|--|--|
| 0               | 307  | 307  | 307  | 307  | 307  | 307  | 307  | 307  | 307  | 307  | 307  | 307  |  |  |  |  |  |  |
| 5               | 242  | 239  | 237  | 243  | 252  | 265  | 274  | 277  | 277  | 270  | 262  | 251  |  |  |  |  |  |  |
| 10              | 136  | 133  | 128  | 131  | 139  | 155  | 167  | 170  | 169  | 160  | 153  | 144  |  |  |  |  |  |  |
| 15              | 71.6 | 68.8 | 65.0 | 64.1 | 66.8 | 73.0 | 78.6 | 82.4 | 82.4 | 81.1 | 78.4 | 74.6 |  |  |  |  |  |  |
| 20              | 38.8 | 36.7 | 35.0 | 34.8 | 36.2 | 39.0 | 41.4 | 43.5 | 45.3 | 44.9 | 43.5 | 41.0 |  |  |  |  |  |  |
| 25              | 20.9 | 18.8 | 17.1 | 17.0 | 18.0 | 20.8 | 23.1 | 25.1 | 26.7 | 26.4 | 25.3 | 23.0 |  |  |  |  |  |  |
| 30              | 10.3 | 8.46 | 7.62 | 7.75 | 8.66 | 10.7 | 13.0 | 14.8 | 15.9 | 15.3 | 14.4 | 12.5 |  |  |  |  |  |  |
| 35              | 5.87 | 4.70 | 4.11 | 4.19 | 4.71 | 6.08 | 7.67 | 9.07 | 9.73 | 9.30 | 8.38 | 7.17 |  |  |  |  |  |  |
| 40              | 2.45 | 1.86 | 1.56 | 1.60 | 2.02 | 2.81 | 3.65 | 4.41 | 4.95 | 4.38 | 3.78 | 3.10 |  |  |  |  |  |  |
| 45              | 1.00 | 0.82 | 0.73 | 0.75 | 0.98 | 1.34 | 1.66 | 1.90 | 2.36 | 1.88 | 1.52 | 1.26 |  |  |  |  |  |  |
| 50              | 0.46 | 0.39 | 0.36 | 0.36 | 0.51 | 0.78 | 0.84 | 0.88 | 1.19 | 0.85 | 0.68 | 0.56 |  |  |  |  |  |  |
| 55              | 0.23 | 0.21 | 0.20 | 0.20 | 0.30 | 0.48 | 0.50 | 0.46 | 0.70 | 0.47 | 0.36 | 0.28 |  |  |  |  |  |  |
| 60              | 0.15 | 0.16 | 0.14 | 0.14 | 0.22 | 0.34 | 0.38 | 0.34 | 0.47 | 0.32 | 0.24 | 0.19 |  |  |  |  |  |  |
| 65              | 0.10 | 0.10 | 0.08 | 0.08 | 0.15 | 0.22 | 0.23 | 0.23 | 0.27 | 0.21 | 0.15 | 0.11 |  |  |  |  |  |  |
| 70              | 0.00 | 0.00 | 0.00 | 0.00 | 0.01 | 0.01 | 0.01 | 0.02 | 0.02 | 0.02 | 0.01 | 0.00 |  |  |  |  |  |  |
| 75              | 0.00 | 0.00 | 0.00 | 0.00 | 0.00 | 0.00 | 0.00 | 0.00 | 0.00 | 0.00 | 0.00 | 0.00 |  |  |  |  |  |  |
| 80              | 0.00 | 0.00 | 0.00 | 0.00 | 0.00 | 0.00 | 0.00 | 0.00 | 0.00 | 0.00 | 0.00 | 0.00 |  |  |  |  |  |  |
| 85              | 0.00 | 0.00 | 0.00 | 0.00 | 0.00 | 0.00 | 0.00 | 0.00 | 0.00 | 0.00 | 0.00 | 0.00 |  |  |  |  |  |  |
| 90              | 0.00 | 0.00 | 0.00 | 0.00 | 0.00 | 0.00 | 0.00 | 0.00 | 0.00 | 0.00 | 0.00 | 0.00 |  |  |  |  |  |  |
| 95              | 0.00 | 0.00 | 0.00 | 0.00 | 0.00 | 0.00 | 0.00 | 0.00 | 0.00 | 0.00 | 0.00 | 0.00 |  |  |  |  |  |  |
| 100             | 0.00 | 0.00 | 0.00 | 0.00 | 0.00 | 0.00 | 0.00 | 0.00 | 0.00 | 0.00 | 0.00 | 0.00 |  |  |  |  |  |  |
| 105             | 0.00 | 0.00 | 0.00 | 0.00 | 0.00 | 0.00 | 0.00 | 0.00 | 0.00 | 0.00 | 0.00 | 0.00 |  |  |  |  |  |  |
| 110             | 0.00 | 0.00 | 0.00 | 0.00 | 0.00 | 0.00 | 0.00 | 0.00 | 0.00 | 0.00 | 0.00 | 0.00 |  |  |  |  |  |  |
| 115             | 0.00 | 0.00 | 0.00 | 0.00 | 0.00 | 0.00 | 0.00 | 0.00 | 0.00 | 0.00 | 0.00 | 0.00 |  |  |  |  |  |  |
| 120             | 0.00 | 0.00 | 0.00 | 0.00 | 0.00 | 0.00 | 0.00 | 0.00 | 0.00 | 0.00 | 0.00 | 0.00 |  |  |  |  |  |  |
| 125             | 0.00 | 0.00 | 0.00 | 0.00 | 0.00 | 0.00 | 0.00 | 0.00 | 0.00 | 0.00 | 0.00 | 0.00 |  |  |  |  |  |  |
| 130             | 0.00 | 0.00 | 0.00 | 0.00 | 0.00 | 0.00 | 0.00 | 0.00 | 0.00 | 0.00 | 0.00 | 0.00 |  |  |  |  |  |  |
| 135             | 0.00 | 0.00 | 0.00 | 0.00 | 0.00 | 0.00 | 0.00 | 0.00 | 0.00 | 0.00 | 0.00 | 0.00 |  |  |  |  |  |  |
| 140             | 0.00 | 0.00 | 0.00 | 0.00 | 0.00 | 0.00 | 0.00 | 0.00 | 0.00 | 0.00 | 0.00 | 0.00 |  |  |  |  |  |  |
| 145             | 0.00 | 0.00 | 0.00 | 0.00 | 0.00 | 0.00 | 0.00 | 0.00 | 0.00 | 0.00 | 0.00 | 0.00 |  |  |  |  |  |  |
| 150             | 0.00 | 0.00 | 0.00 | 0.00 | 0.00 | 0.00 | 0.00 | 0.00 | 0.00 | 0.00 | 0.00 | 0.00 |  |  |  |  |  |  |
| 155             | 0.00 | 0.00 | 0.00 | 0.00 | 0.00 | 0.00 | 0.00 | 0.00 | 0.00 | 0.00 | 0.00 | 0.00 |  |  |  |  |  |  |
| 160             | 0.00 | 0.00 | 0.00 | 0.00 | 0.00 | 0.00 | 0.00 | 0.00 | 0.00 | 0.00 | 0.00 | 0.00 |  |  |  |  |  |  |
| 165             | 0.00 | 0.00 | 0.00 | 0.00 | 0.00 | 0.00 | 0.00 | 0.00 | 0.00 | 0.00 | 0.00 | 0.00 |  |  |  |  |  |  |
| 170             | 0.00 | 0.00 | 0.00 | 0.00 | 0.00 | 0.00 | 0.00 | 0.00 | 0.00 | 0.00 | 0.00 | 0.00 |  |  |  |  |  |  |
| 175             | 0.00 | 0.00 | 0.00 | 0.00 | 0.00 | 0.00 | 0.00 | 0.00 | 0.00 | 0.00 | 0.00 | 0.00 |  |  |  |  |  |  |
| 180             | 0.00 | 0.00 | 0.00 | 0.00 | 0.00 | 0.00 | 0.00 | 0.00 | 0.00 | 0.00 | 0.00 | 0.00 |  |  |  |  |  |  |

C Range: 0 - 360DEG  
C Interval: 30.0DEG  
Test Speed: HIGH  
Temperature:25.3℃  
Operators:zoe  
Test Date:2024-10-14

Range: 0 - 180DEG  
Interval: 1.0DEG  
Test System:EVERFINE GO-SPEX500\_V1 SYSTEM V2.00.461  
Humidity:65.0%  
Test Distance:3.160m [K=1.0000]  
Remarks: LAMP:BXCP-30G-11L-J11-3-A1-00-0-0 Ra:90  
LENS:PM-0137 30R  
NOT DRIVER:300mA  
30minutes warm-up